

# MA 260

## Compact hand-lever Test Fixture

The compact Manual Test Fixture **MA 260** was developed as a space-saving hand-lever Test Fixture for testing small and medium-sized PC-Boards. The robust design with its generous and free accessibility even when closed and in a contacted state as well as the high stability in regard to unbalanced loads, allows contacting of up to 150 test points with up to 2.0 N spring force per probe. The Replacement Kits which are available as Standard- or ESD-Version and which offer a max. usable area of 160 x 100 mm (6.299 x 3.937 "), can be inserted without the use of any tools within seconds and without post adjustment. The housing is open on the bottom-side, has a removable back panel and can be removed completely. Customizing can be carried out either by INGUN or individually by the customer. For individual customizing Start-up Kits with all common components are available.

- ✓ Quick-exchange system, without post adjustment
- ✓ Probe Plate Unit and Pressure Frame can be screwed together to build one unit with protected probe field (for storage/transport)
- ✓ Removable back panel
- ✓ Completely removable housing (MA 260 standing on 4 posts)
- ✓ Sequence contacting of PC-Boards with multiple panel possible
- ✓ Individual linking to Test System, optionally with 64-pole VG-strip
- ✓ Single-sided or double-sided Contacting

### Technical Information:

- Outside Dim. MA 260 (closed): approx. 260 x 300 x 200 mm (w x d x h)  
(10.236 x 11.811 x 7.874 ")
- Outside Dim. MA 260 (open): approx. 260 x 260 x 320 mm (w x d x h)  
(10.236 x 10.236 x 12.598 ")
- Max. Usable Area ATS 260: approx. 160 x 100 mm (w x d)  
(6.299 x 3.937 ")
- Max. Usable Area ATS 260/ESD: approx. 160 x 100 mm (w x d)  
(6.299 x 3.937 ")
- Max. Contacting Force: up to 300 N (1079.08 oz)
- Guided Parallel Stroke: approx. 15 mm (.591 ")
- Max. Comp. Height on PCB: approx. 52 mm (2.047 ")
- Pressure Frame Opening angle: approx. 70°
- Installation Height GKS: 10.5 mm (.413 ")
- Weight MA 260: approx. 3.62 kg (7.98 lb)
- Weight ATS 260: approx. 1.17 kg (2.58 lb)

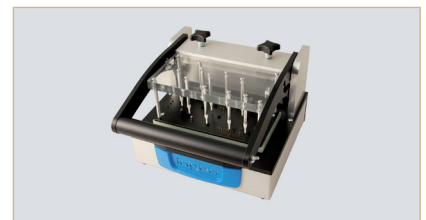
### Ordering Information:

- Manual Test Fixture MA 260: Part No.: **40600**
- Replacement Kit ATS 260: Part No.: **41220**
- Replacement Kit ATS 260/ESD: Part No.: **41225**

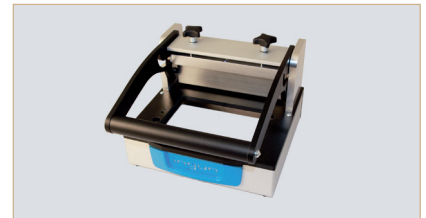
### Recommended optionally available accessories:

- Set 64-pole VG-strip (DIN 41612): Part No.: **43135**
- Start-up Kit MA 21xx, MA 260, MA 60: Part No.: **34730** (small)

Please contact us for further information. Prices and delivery time on request.  
Technical changes possible without prior notification.



MA 260 with ATS 260 (customized)



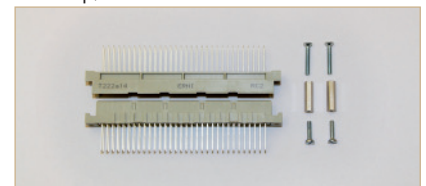
MA 260



ATS 260 (front view - customized, with VG-strip)



ATS 260 (back-view - customized, with VG-strip)



Set 64-pole VG-strip (DIN 41612)

